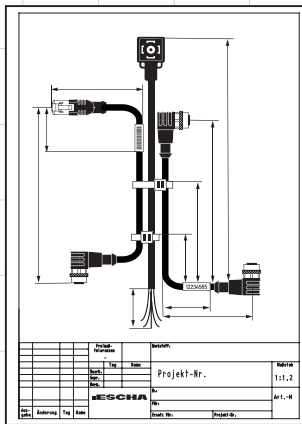
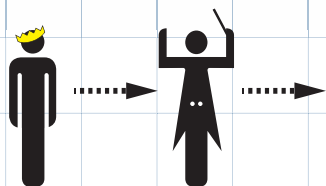
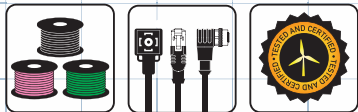
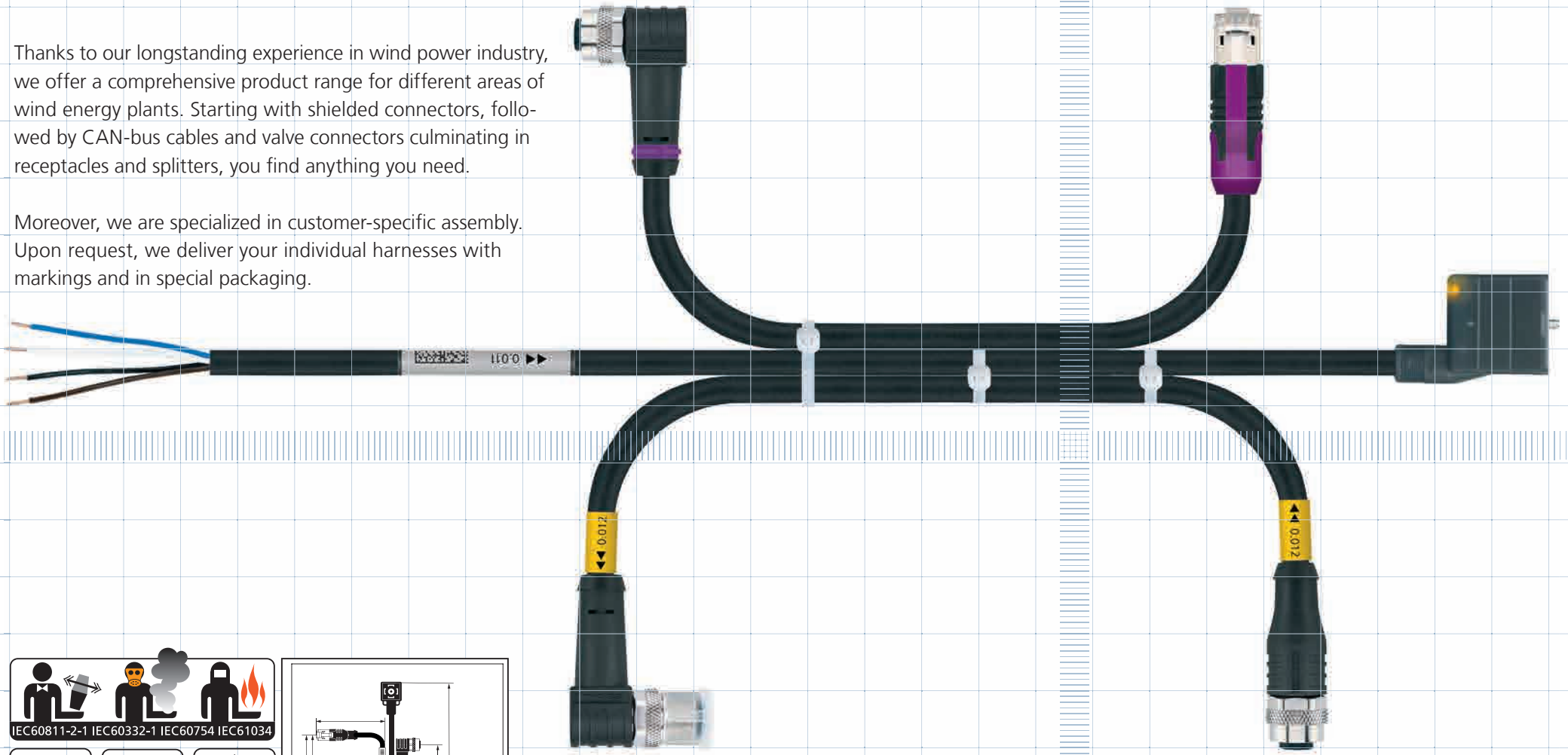


Solutions for Wind Turbines



Thanks to our longstanding experience in wind power industry, we offer a comprehensive product range for different areas of wind energy plants. Starting with shielded connectors, followed by CAN-bus cables and valve connectors culminating in receptacles and splitters, you find anything you need.

Moreover, we are specialized in customer-specific assembly. Upon request, we deliver your individual harnesses with markings and in special packaging.



ESCHA products for wind turbines

- M12x1 shielded connecting cables and pigtails
- CAN-Bus cables (M12x1)
- Valve plugs according DINEN 175301-803
- M12x1 receptacles, Y-splitters, T-pieces
- Customer-specific assembly
- Cable bundles, kit sets or special packaging
- patented ESCHA two-shell shielding concept (2SSK): safe 360°-shielding in spite of high vibration loads
- low transfer impedance
- lightning protection
- HALT test approved
- hydraulics-, mineral oil-, lubricants compatible IEC 60811-2-1
- halogene free (LSZH)
- flame retardant IEC 60332-1/-2
- smoke density IEC 61034-2
- Corrosiveness of toxic gases IEC 607542-1/-2
- UL/CSA

Raw cables for wind turbines

- Low smoke zero halogen (LSZH)
- Double shielded (copper mesh + metallic foil)
- Oil resistant according to IEC 60811-2-1
- Fire retardant according to IEC 60332-1
- Corrosivity of gases according to IEC 60754
- Smoke visibility according to IEC 61034

